



FLOWELL



Website : www.flowellpneumatics.in
E-mail : info@flowellpneumatics.in



CERTIFICATIONS



PATENTED SEALING



ISO 9001:2015



CE CONFORMITY



FIRE RESISTANT



DESIGN REGISTRATION



DESIGN REGISTRATION



PRESSURE RATING TESTED BY ARAI



FPPL Products Meet The Requirements of ASME B31.3 Standard



10 Years Warranty For GEM / ACE / ACE+ Ranges



FLOWELL PNEUMATICS PVT LTD provides the complete compressed air piping solution with excellent operational efficiency and perfect suitability for various industrial applications at competitive cost.

FLOWELL piping system stays ahead in competition when it comes to reliability, rigidness, quality and durability. Our system is modular and corrosion free, it meets the highest industrial standards and has 10 years warranty.

FLOWELL solid metal piping system offers you simple design and substantial strength which ensures easy installation. It is an excellent choice for compressed air/vacuum and inert gases for distribution up to 16 bar/-0.87 bar operating pressure in the temperature range -20°C to 75°C.

The smoother interior construction of extruded aluminium pipe 6063-T6 and SS-304/316-L seamless pipe has low coefficient of friction and full bore fittings which minimizes the pressure loss and provide best laminar flow & leak free connections are preventing air loss/wastage.

Flowell Pneumatics Pvt. Ltd., has introduced three range of compressed air & inert gas piping systems.

GEM – Aluminum Pipes with SS 202 fittings for General Industrial applications.

ACE – SS 304 Pipes with SS 304 fittings for Food and Beverage applications.

ACE Plus – SS 316L Pipes & SS 316L fittings specially for Pharmaceutical applications.



TEXTILES INDUSTRIES



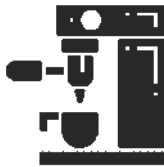
AEROSPACE



FOUNDRY



RAILWAYS



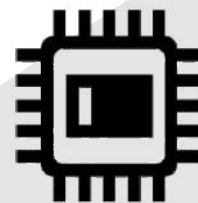
MACHINE SHOP



AUTOMOBILE



PACKAGING



ELECTRONICS



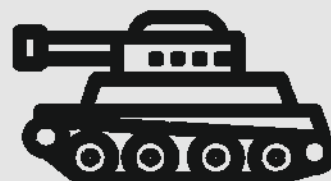
PAPER MILL



THERMAL POWER



OEM



DEFENCE

NPS	½"	1"	1 ½"	2"	2 ½"	3"	4"
Size	φ21	φ33	φ48	φ60	φ73	φ90	φ114

TECHNICAL CHARACTERISTICS FOR GEM SERIES

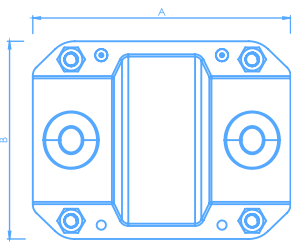
- **Diameters (in mm)**
21-33-48-60-73-90-114
- **Max working temp**
-20°C to 75°C
- **Max working pressure**
16 bar : For sizes 21, 33, 48, 60
13 bar : For sizes 73, 90, 114
- **Vacuum level**
-0.87 bar
- **Pipe material**
Aluminium Alloy 6063-T6, Conforming to EN 573-3, EN 755-2, EN 755-8
- **Pipe fittings material**
SS 202
- **Sealing material**
NBR
- **Standard**
FLOWELL GEM Series products meet the requirements of ASME B31.3
- **Standard colour and Coating of Pipe**
RAL 5012 , Externally Polyester Powdered and internally chromated
- **Compatibility**
Compatible with all Compressor oil / Oil free compressed air, Industrial vacuum, Nitrogen and Inert gases.

Aluminium Pipe



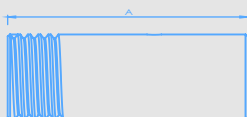
Part Number	Size	Length
FPP-A-21-04	21	4000
FPP-A-33-5.7	33	5700
FPP-A-48-5.7	48	5700
FPP-A-60-5.7	60	5700
FPP-A-73-5.7	73	5700
FPP-A-90-5.7	90	5700
FPP-A-114-5.7	114	5700

Coupling-SS 202



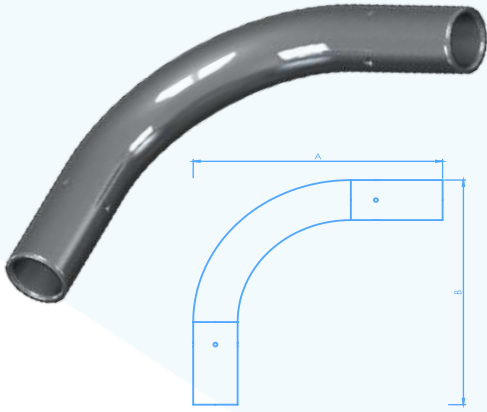
Part Number	Size	A	B
FPC-2-21	21	94	52
FPC-2-33	33	100	64
FPC-2-48	48	111	85
FPC-2-60	60	118	115
FPC-2-73	73	142	120
FPC-2-90	90	168	141
FPC-2-114	114	185	196

Male Adapter – SS 202



Part Number	Size	A
FPMAC-2-21	21	85
FPMAC-2-33	33	95
FPMAC-2-48	48	100
FPMAC-2-60	60	105
FPMAC-2-73	73	120

Bend – SS 202



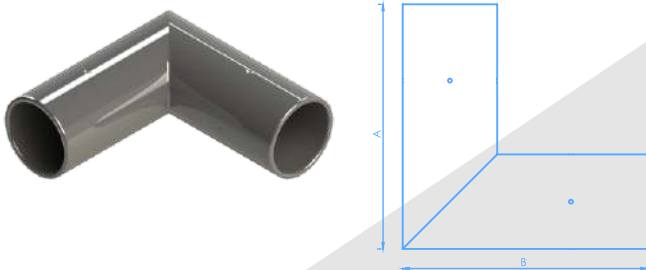
Part Number	Size	A	B
FPBC-2-21	21	120	120
FPBC-2-33	33	162	162

Female Threaded Elbow – SS 202



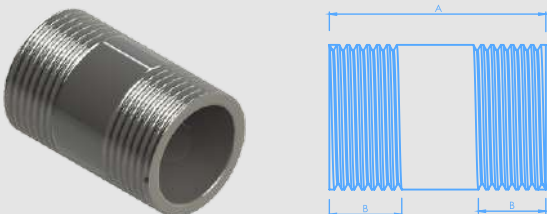
Part Number	A	B
FPTE-2-21	43	43
FPTE-2-33	56	56

Elbow – SS 202



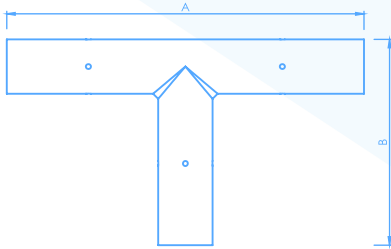
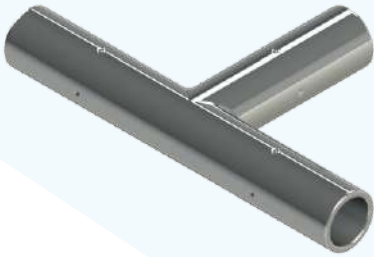
Part Number	Size	A	B
FPEC-2-48	48	125	125
FPEC-2-60	60	145	145
FPEC-2-73	73	170	170
FPEC-2-90	90	205	205
FPEC-2-114	114	235	235

Barrel Nipple – SS 202



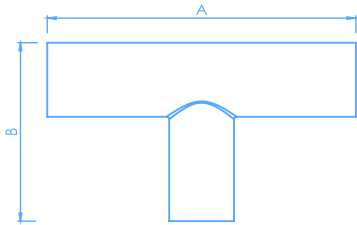
Part Number	Size	A	B
FPBN-2-33	33	50	16
FPBN-2-48	48	70	19
FPBN-2-60	60	90	25

Tee – SS 202



Part Number	Size	A	B
FPTC-2-33	33	180	105
FPTC-2-48	48	200	125
FPTC-2-60	60	230	145
FPTC-2-73	73	265	170
FPTC-2-90	90	320	205
FPTC-2-114	114	355	235

Reducing Tee – SS 202



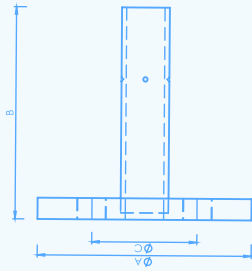
Part Number	Size	A	B
FPRTC-2-114X90	114X90	355	215
FPRTC-2-90X73	90X73	320	180
FPRTC-2-73X60	73X60	265	152
FPRTC-2-60X48	60X48	230	130

End Cap – SS 202



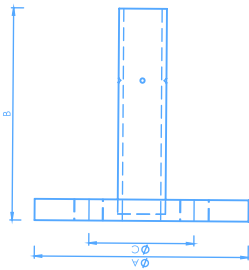
Part Number	Size	A	B
FPECC-2-21	21	72	34
FPECC-2-33	33	75	44
FPECC-2-48	48	80	59
FPECC-2-60	60	83	69
FPECC-2-73	73	96	84
FPECC-2-90	90	109	99
FPECC-2-114	114	117	124

BS-10 Table F Flange Adaptor - SS 202



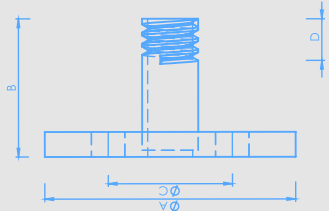
Part Number	Size	A	B	C
FPFAC-2-33	33	121	85	87
FPFAC-2-48	48	140	95	105
FPFAC-2-60	60	165	100	127
FPFAC-2-73	73	184	115	146
FPFAC-2-90	90	203	125	165
FPFAC-2-114	114	229	135	190

BS-10 Table F Reducing Flange Adaptor - SS 202



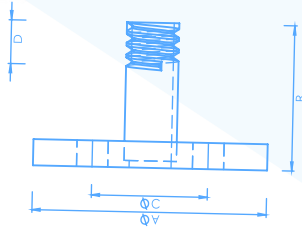
Part Number	Size	A	B	C
FPRFAC-2-60X48	60X48	165	95	127
FPRFAC-2-73X60	73X60	184	100	146
FPRFAC-2-73X48	73X48	184	95	146
FPRFAC-2-90X73	90X73	203	115	165
FPRFAC-2-90X60	90X60	203	100	165
FPRFAC-2-114X90	114X90	229	125	190
FPRFAC-2-114X73	114X73	229	115	190

BS-10 Table F Threaded Flange Adaptor - SS 202



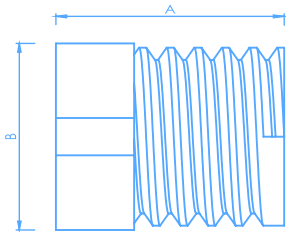
Part Number	Size	A	B	C	D
FPTFA-2-33	33	121	55	87	19
FPTFA-2-48	48	140	60	105	20
FPTFA-2-60	60	165	65	127	24
FPTFA-2-73	73	184	65	146	24
FPTFA-2-90	90	203	65	165	25
FPTFA-2-114	114	229	70	190	25

BS-10 Table F Threaded Reducing Flange Adaptor - SS 202



Part Number	Size	A	B	C	D
FPTRFA-2-60X48	60X48	165	60	127	20
FPTRFA-2-73X60	73X60	184	65	146	24
FPTRFA-2-73X48	73X48	184	60	146	20
FPTRFA-2-90X73	90X73	203	65	165	24
FPTRFA-2-90X60	90X60	203	65	165	24
FPTRFA-2-114X90	114X90	229	65	190	25
FPTRFA-2-114X73	114X73	229	65	190	24

Reducing Bush Male & Female – Aluminium



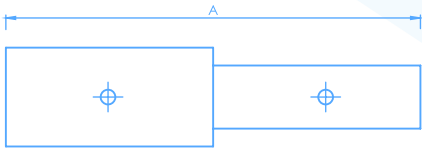
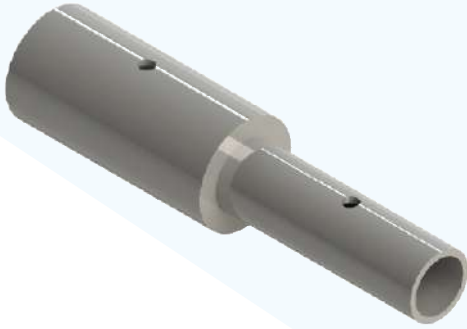
Part Number	Size	A	B
FPRB-A-27X21	27X21	35	30
FPRB-A-27X33	27X33	35	35
FPRB-A-33X21	33X21	35	35
FPRB-A-48X33	48X33	40	50
FPRB-A-48X21	48X21	40	50
FPRB-A-60X48	60X48	45	65
FPRB-A-60X33	60X33	45	65
FPRB-A-60X21	60X21	45	65
FPRB-A-73X60	73X60	45	75
FPRB-A-73X48	73X48	45	75
FPRB-A-73X33	73X33	45	75
FPRB-A-73X21	73X21	45	75

Double Nipple – SS 202



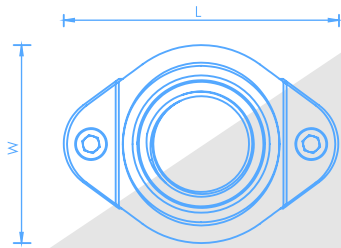
Part Number	Size	Length
FPDN-2-21	21	65
FPDN-2-33	33	70
FPDN-2-48	48	75
FPDN-2-60	60	80

Line Reducer – Aluminium

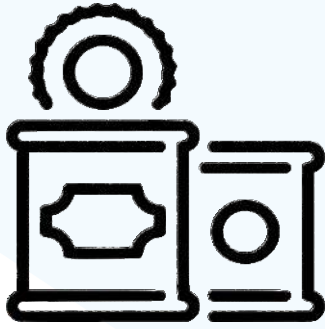


Part Number	Size	A
FPLRC-A-33X21	33X21	110
FPLRC-A-48X33	48X33	115
FPLRC-A-60X48	60X48	125
FPLRC-A-60X33	60X33	120
FPLRC-A-73X60	73X60	140
FPLRC-A-73X48	73X48	135
FPLRC-A-90X73	90X73	160
FPLRC-A-90X60	90X60	150
FPLRC-A-90X48	90X48	145
FPLRC-A-114X90	114X90	175
FPLRC-A-114X73	114X73	165
FPLRC-A-114X60	114X60	155
FPLRC-A-114X48	114X48	150

Saddle Branch – SS 202



Part Number	Size	L	W
FPSB-2-33X21	33X21	69	45
FPSB-2-48X33	48X33	84	62
FPSBRB-2A-48X21	48X21	84	62
FPSB-2-60X33	60X33	103	65
FPSBRB-2A-60X21	60X21	103	65
FPSB-2-73X48	73X48	118	80
FPSBRB-2A-73x33	73x33	118	80
FPSBRB-2A-73X21	73X21	118	80
FPSB-2-90X60	90X60	144	95
FPSBRB-2A-90x48	90x48	144	95
FPSBRB-2A-90X33	90X33	144	95
FPSBRB-2A-90X21	90X21	144	95
FPSB-2-114X73	114X73	175	115
FPSBRB-2A-114X60	114X60	175	115
FPSBRB-2A-114X48	114X48	175	115
FPSBRB-2A-114X33	114X33	175	115
FPSBRB-2A-114X21	114X21	175	115



FOOD

BEVERAGE



OIL & GAS

CHEMICAL



NPS	½"	1"	1 ½"	2"	2 ½"	3"	4"
Size	φ21	φ33	φ48	φ60	φ73	φ90	φ114

TECHNICAL CHARACTERISTICS FOR ACE SERIES

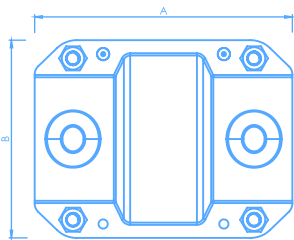
- **Diameters (in mm)**
21-33-48-60-73-90-114
- **Max working temp**
-20°C to 75°C
- **Max working pressure**
16 bar : For sizes 21, 33, 48, 60
13 bar : For sizes 73, 90, 114
- **Vacuum level**
-0.87 bar
- **Pipe material**
SS 304 ERW/Seamless Pipes, Conforming to EN 10217-7, EN 10216-1
- **Pipe fittings material**
SS 304
- **Sealing material**
NBR / Silicone
- **Standard**
FLOWELL ACE Series products meet the requirements of ASME B31.3
- **Standard Finish of Pipe**
For Air - Matte Finish
For GAS - Matte Finish with respective standard gas colour radium lining
- **Compatibility**
Compatible with all Compressor oil / Oil free compressed air, Industrial vacuum, Nitrogen and Inert gases.

SS 304 - Seamless Pipe



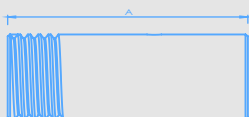
Part Number	Size	Length
FPP-4-21-5.7	21	5700
FPP-4-33-5.7	33	5700
FPP-4-48-5.7	48	5700
FPP-4-60-5.7	60	5700
FPP-4-73-5.7	73	5800
FPP-4-90-5.7	90	5700
FPP-4-114-5.7	114	5700

Coupling-SS 304



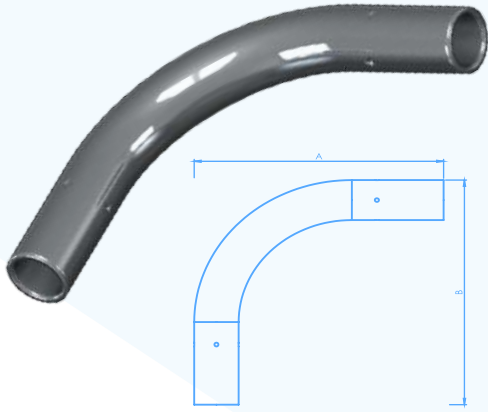
Part Number	Size	A	B
FPC-4-21	21	94	52
FPC-4-33	33	100	64
FPC-4-48	48	111	85
FPC-4-60	60	118	115
FPC-4-73	73	142	120
FPC-4-90	90	168	141
FPC-4-114	114	185	196

Male Adapter – SS 304



Part Number	Size	A
FPMAC-4-21	21	85
FPMAC-4-33	33	95
FPMAC-4-48	48	100
FPMAC-4-60	60	105
FPMAC-4-73	73	120

Bend – SS 304



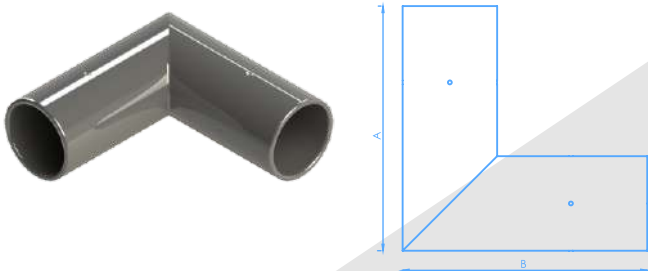
Part Number	Size	A	B
FPBC-4-21	21	120	120
FPBC-4-33	33	162	162

Female Threaded Elbow – SS 304



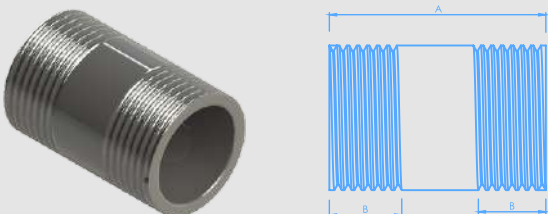
Part Number	A	B
FPTE-4-21	43	43
FPTE-4-33	56	56

Elbow – SS 304



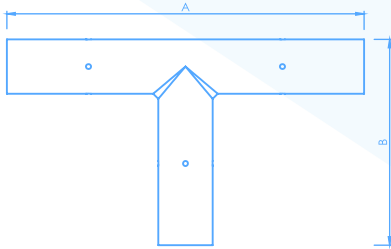
Part Number	Size	A	B
FPEC-4-48	48	125	125
FPEC-4-60	60	145	145
FPEC-4-73	73	170	170
FPEC-4-90	90	205	205
FPEC-4-114	114	235	235

Barrel Nipple – SS 304



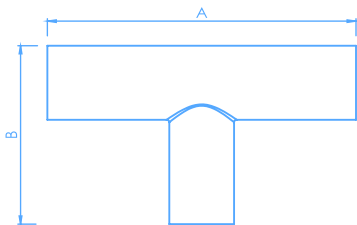
Part Number	Size	A	B
FPBN-4-33	33	50	16
FPBN-4-48	48	70	19
FPBN-4-60	60	90	25

Tee – SS 304



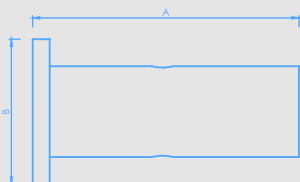
Part Number	Size	A	B
FPTC-4-33	33	180	105
FPTC-4-48	48	200	125
FPTC-4-60	60	230	145
FPTC-4-73	73	265	170
FPTC-4-90	90	320	205
FPTC-4-114	114	355	235

Reducing Tee – SS 304



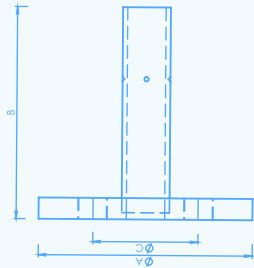
Part Number	Size	A	B
FPRTC-4-114X90	114X90	355	215
FPRTC-4-90X73	90X73	320	180
FPRTC-4-73X60	73X60	265	152
FPRTC-4-60X48	60X48	230	130

End Cap – SS 304



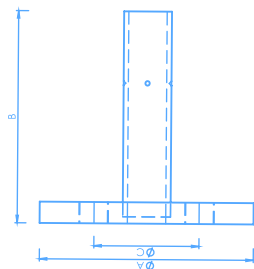
Part Number	Size	A	B
FPECC-4-21	21	72	34
FPECC-4-33	33	75	44
FPECC-4-48	48	80	59
FPECC-4-60	60	83	69
FPECC-4-73	73	96	84
FPECC-4-90	90	109	99
FPECC-4-114	114	117	124

BS-10 Table F Flange Adaptor - SS 304



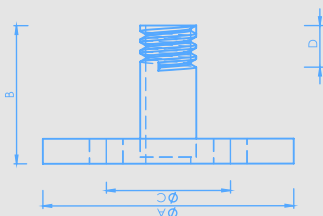
Part Number	Size	A	B	C
FPFAC-4-33	33	121	85	87
FPFAC-4-48	48	140	95	105
FPFAC-4-60	60	165	100	127
FPFAC-4-73	73	184	115	146
FPFAC-4-90	90	203	125	165
FPFAC-4-114	114	229	135	190

BS-10 Table F Reducing Flange Adaptor - SS 304



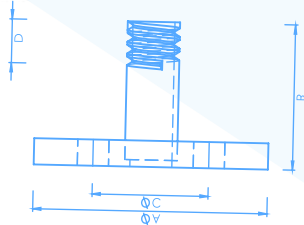
Part Number	Size	A	B	C
FPRFAC-4-60X48	60X48	165	95	127
FPRFAC-4-73X60	73X60	184	100	146
FPRFAC-4-73X48	73X48	184	95	146
FPRFAC-4-90X73	90X73	203	115	165
FPRFAC-4-90X60	90X60	203	100	165
FPRFAC-4-114X90	114X90	229	125	190
FPRFAC-4-114X73	114X73	229	115	190

BS-10 Table F Threaded Flange Adaptor - SS 304



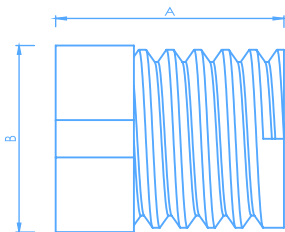
Part Number	Size	A	B	C	D
FPTFA-4-33	33	121	55	87	19
FPTFA-4-48	48	140	60	105	20
FPTFA-4-60	60	165	65	127	24
FPTFA-4-73	73	184	65	146	24
FPTFA-4-90	90	203	65	165	25
FPTFA-4-114	114	229	70	190	25

BS-10 Table F Threaded Reducing Flange Adaptor - SS 304



Part Number	Size	A	B	C	D
FPTRFA-4-60X48	60X48	165	60	127	20
FPTRFA-4-73X60	73X60	184	65	146	24
FPTRFA-4-73X48	73X48	184	60	146	20
FPTRFA-4-90X73	90X73	203	65	165	24
FPTRFA-4-90X60	90X60	203	65	165	24
FPTRFA-4-114X90	114X90	229	65	190	25
FPTRFA-4-114X73	114X73	229	65	190	24

Reducing Bush Male & Female – SS 304



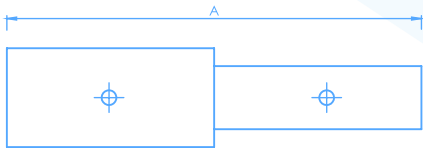
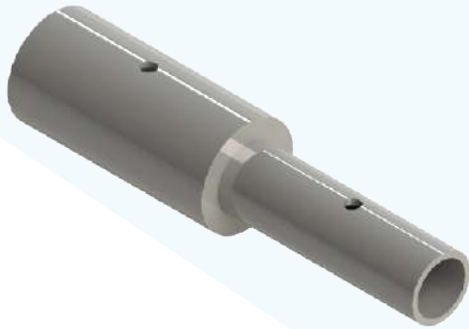
Part Number	Size	A	B
FPRB-4-27X21	27X21	35	30
FPRB-4-27X33	27X33	35	35
FPRB-4-33X21	33X21	35	35
FPRB-4-48X33	48X33	40	50
FPRB-4-48X21	48X21	40	50
FPRB-4-60X48	60X48	45	65
FPRB-4-60X33	60X33	45	65
FPRB-4-60X21	60X21	45	65
FPRB-4-73X60	73X60	45	75
FPRB-4-73X48	73X48	45	75
FPRB-4-73X33	73X33	45	75
FPRB-4-73X21	73X21	45	75

Double Nipple – SS 304



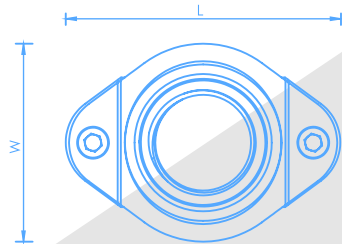
Part Number	Size	Length
FPDN-4-21	21	65
FPDN-4-33	33	70
FPDN-4-48	48	75
FPDN-4-60	60	80

Line Reducer – SS 304



Part Number	Size	A
FPLRC-4-33X21	33X21	110
FPLRC-4-48X33	48X33	115
FPLRC-4-60X48	60X48	125
FPLRC-4-60X33	60X33	120
FPLRC-4-73X60	73X60	140
FPLRC-4-73X48	73X48	135
FPLRC-4-90X73	90X73	160
FPLRC-4-90X60	90X60	150
FPLRC-4-90X48	90X48	145
FPLRC-4-114X90	114X90	175
FPLRC-4-114X73	114X73	165
FPLRC-4-114X60	114X60	155
FPLRC-4-114X48	114X48	150

Saddle Branch – SS 304



Part Number	Size	L	W
FPSB-4-33X21	33X21	69	45
FPSB-4-48X33	48X33	84	62
FPSBRB-4A-48X21	48X21	84	62
FPSB-4-60X33	60X33	103	65
FPSBRB-4A-60X21	60X21	103	65
FPSB-4-73X48	73X48	118	80
FPSBRB-4A-73x33	73x33	118	80
FPSBRB-4A-73X21	73X21	118	80
FPSB-4-90X60	90X60	144	95
FPSBRB-4A-90x48	90x48	144	95
FPSBRB-4A-90X33	90X33	144	95
FPSBRB-4A-90X21	90X21	144	95
FPSB-4-114X73	114X73	175	115
FPSBRB-4A-114X60	114X60	175	115
FPSBRB-4A-114X48	114X48	175	115
FPSBRB-4A-114X33	114X33	175	115
FPSBRB-4A-114X21	114X21	175	115



PHARMACEUTICAL & BLISTER PACKAGING INDUSTRIES



RESEARCH & DEVELOPMENT LABORATORY

NPS	½"	1"	1 ½"	2"	2 ½"	3"	4"
Size	φ21	φ33	φ48	φ60	φ73	φ90	φ114

TECHNICAL CHARACTERISTICS FOR ACE+ SERIES

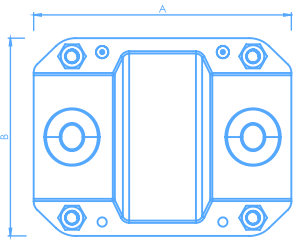
- **Diameters (in mm)**
21-33-48-60-73-90-114
- **Max working temp**
-20°C to 75°C
- **Max working pressure**
16 bar : For sizes 21, 33, 48, 60
13 bar : For sizes 73, 90, 114
- **Vacuum level**
-0.87 bar
- **Pipe material**
SS 316-L ERW/Seamless Pipes, Conforming to EN 10217-7, EN 10216-1
- **Pipe fittings material**
SS 316-L
- **Sealing material**
Viton/Silicone
- **Standard**
FLOWELL ACE+ Series products meet the requirements of ASME B31.3
- **Standard Finish of Pipe**
For Air - Matte Finish
For GAS - Matte Finish with respective standard gas colour radium lining
- **Compatibility**
Compatible with all Compressor oil / Oil free compressed air, Industrial vacuum, Nitrogen and Inert gases.

SS 316 L - Seamless Pipe



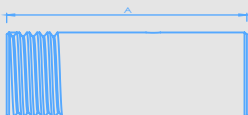
Part Number	Size	Length
FPP-6-21-5.7	21	5700
FPP-6-33-5.7	33	5700
FPP-6-48-5.7	48	5700
FPP-6-60-5.7	60	5700
FPP-6-73-5.7	73	5700
FPP-6-90-5.7	90	5700
FPP-6-114-5.7	114	5700

Coupling-SS 316 L



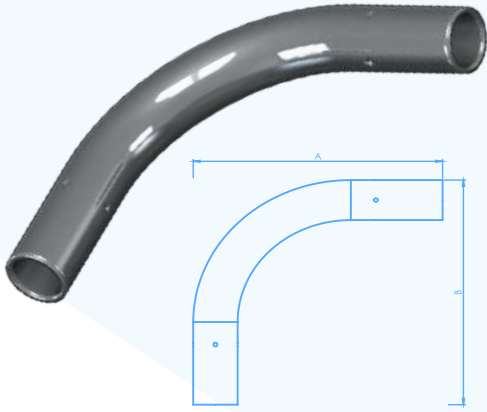
Part Number	Size	A	B
FPC-6-21	21	94	52
FPC-6-33	33	100	64
FPC-6-48	48	111	85
FPC-6-60	60	118	115
FPC-6-73	73	142	120
FPC-6-90	90	168	141
FPC-6-114	114	185	196

Male Adapter – SS 316-L



Part Number	Size	A
FPMAC-6-21	21	85
FPMAC-6-33	33	95
FPMAC-6-48	48	100
FPMAC-6-60	60	105
FPMAC-6-73	73	120

Bend – SS 316-L



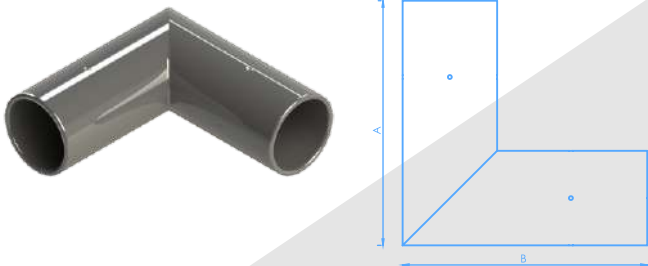
Part Number	Size	A	B
FPBC-6-21	21	120	120
FPBC-6-33	33	162	162

Female Threaded Elbow – SS 316-L



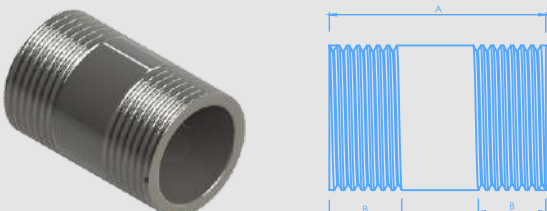
Part Number	A	B
FPTE-6-21	43	43
FPTE-6-33	56	56

Elbow – SS 316-L



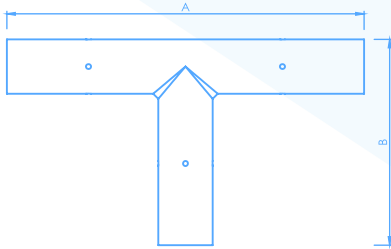
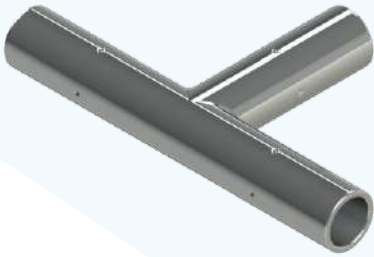
Part Number	Size	A	B
FPEC-6-48	48	125	125
FPEC-6-60	60	145	145
FPEC-6-73	73	170	170
FPEC-6-90	90	205	205
FPEC-6-114	114	235	235

Barrel Nipple – SS 316-L



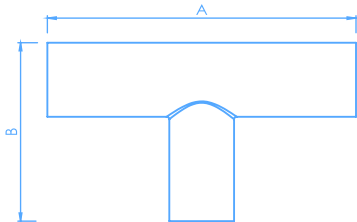
Part Number	Size	A	B
FPBN-6-33	33	50	16
FPBN-6-48	48	70	19
FPBN-6-60	60	90	25

Tee – SS 316-L



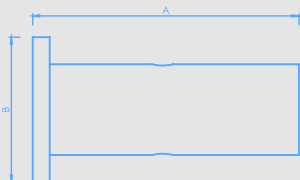
Part Number	Size	A	B
FPTC-6-33	33	180	105
FPTC-6-48	48	200	125
FPTC-6-60	60	230	145
FPTC-6-73	73	265	170
FPTC-6-90	90	320	205
FPTC-6-114	114	355	235

Reducing Tee – SS 316-L



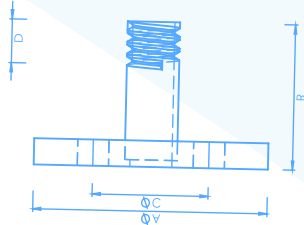
Part Number	Size	A	B
FPRTC-6-114X90	114X90	355	215
FPRTC-6-90X73	90X73	320	180
FPRTC-6-73X60	73X60	265	152
FPRTC-6-60X48	60X48	230	130

End Cap – SS 316-L



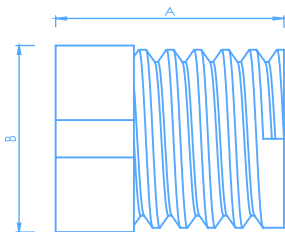
Part Number	Size	A	B
FPECC-6-21	21	72	34
FPECC-6-33	33	75	44
FPECC-6-48	48	80	59
FPECC-6-60	60	83	69
FPECC-6-73	73	96	84
FPECC-6-90	90	109	99
FPECC-6-114	114	117	124

BS-10 Table F Threaded Reducing Flange Adaptor - SS 316-L



Part Number	Size	A	B	C	D
FPTRFA-6-60X48	60X48	165	60	127	20
FPTRFA-6-73X60	73X60	184	65	146	24
FPTRFA-6-73X48	73X48	184	60	146	20
FPTRFA-6-90X73	90X73	203	65	165	24
FPTRFA-6-90X60	90X60	203	65	165	24
FPTRFA-6-114X90	114X90	229	65	190	25
FPTRFA-6-114X73	114X73	229	65	190	24

Reducing Bush Male & Female – SS 316-L



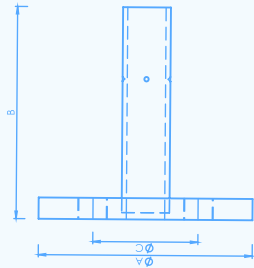
Part Number	Size	A	B
FPRB-6-27X21	27X21	35	30
FPRB-6-27X33	27X33	35	35
FPRB-6-33X21	33X21	35	35
FPRB-6-48X33	48X33	40	50
FPRB-6-48X21	48X21	40	50
FPRB-6-60X48	60X48	45	65
FPRB-6-60X33	60X33	45	65
FPRB-6-60X21	60X21	45	65
FPRB-6-73X60	73X60	45	75
FPRB-6-73X48	73X48	45	75
FPRB-6-73X33	73X33	45	75
FPRB-6-73X21	73X21	45	75

Double Nipple – SS 316-L



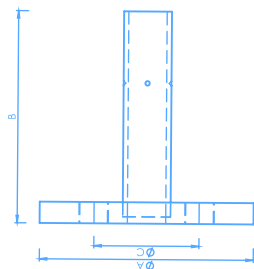
Part Number	Size	Length
FPDN-6-21	21	65
FPDN-6-33	33	70
FPDN-6-48	48	75
FPDN-6-60	60	80

BS-10 Table F Flange Adaptor - SS 316-L



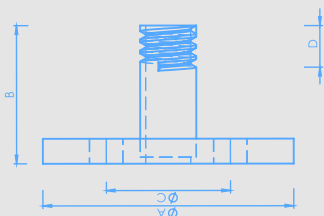
Part Number	Size	A	B	C
FPFA-6-33	33	121	85	87
FPFA-6-48	48	140	95	105
FPFA-6-60	60	165	100	127
FPFA-6-73	73	184	115	146
FPFA-6-90	90	203	125	165
FPFA-6-114	114	229	135	190

BS-10 Table F Reducing Flange Adaptor - SS 316-L



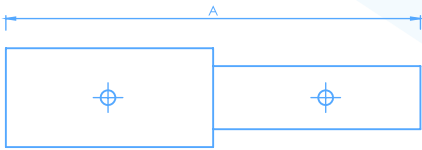
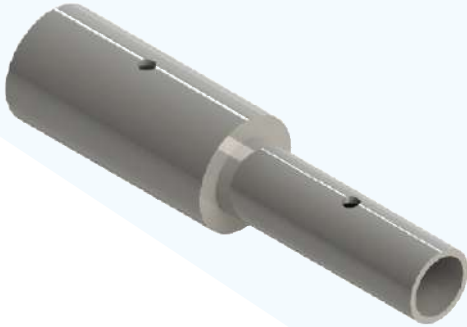
Part Number	Size	A	B	C
FPRFA-6-60X48	60X48	165	95	127
FPRFA-6-73X60	73X60	184	100	146
FPRFA-6-73X48	73X48	184	95	146
FPRFA-6-90X73	90X73	203	115	165
FPRFA-6-90X60	90X60	203	100	165
FPRFA-6-114X90	114X90	229	125	190
FPRFA-6-114X73	114X73	229	115	190

BS-10 Table F Threaded Flange Adaptor - SS 316-L



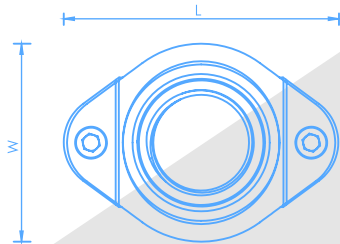
Part Number	Size	A	B	C	D
FPTFA-6-33	33	121	55	87	19
FPTFA-6-48	48	140	60	105	20
FPTFA-6-60	60	165	65	127	24
FPTFA-6-73	73	184	65	146	24
FPTFA-6-90	90	203	65	165	25
FPTFA-6-114	114	229	70	190	25

Line Reducer – SS 316-L



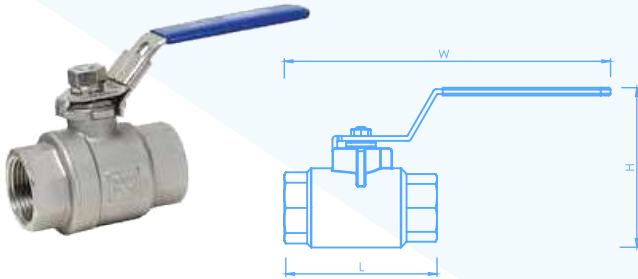
Part Number	Size	A
FPLRC-6-33X21	33X21	110
FPLRC-6-48X33	48X33	115
FPLRC-6-60X48	60X48	125
FPLRC-6-60X33	60X33	120
FPLRC-6-73X60	73X60	140
FPLRC-6-73X48	73X48	135
FPLRC-6-90X73	90X73	160
FPLRC-6-90X60	90X60	150
FPLRC-6-90X48	90X48	145
FPLRC-6-114X90	114X90	175
FPLRC-6-114X73	114X73	165
FPLRC-6-114X60	114X60	155
FPLRC-6-114X48	114X48	150

Saddle Branch – SS 316-L



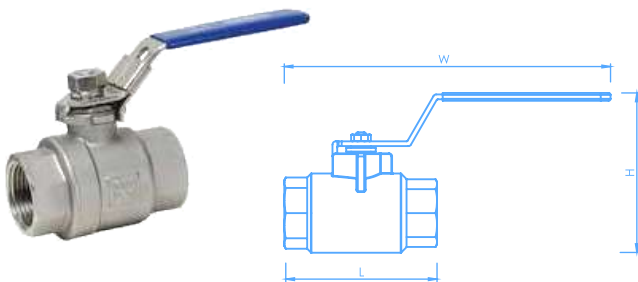
Part Number	Size	L	W
FPSB-6-33X21	33X21	69	45
FPSB-6-48X33	48X33	84	62
FPSBRB-6A-48X21	48X21	84	62
FPSB-6-60X33	60X33	103	65
FPSBRB-6A-60X21	60X21	103	65
FPSB-6-73X48	73X48	118	80
FPSBRB-6A-73x33	73x33	118	80
FPSBRB-6A-73X21	73X21	118	80
FPSB-6-90X60	90X60	144	95
FPSBRB-6A-90x48	90x48	144	95
FPSBRB-6A-90X33	90X33	144	95
FPSBRB-6A-90X21	90X21	144	95
FPSB-6-114X73	114X73	175	115
FPSBRB-6A-114X60	114X60	175	115
FPSBRB-6A-114X48	114X48	175	115
FPSBRB-6A-114X33	114X33	175	115
FPSBRB-6A-114X21	114X21	175	115

SS-202-ONE PIECE FULL BORE FEMALE THREAD BALL VALVE PN-16



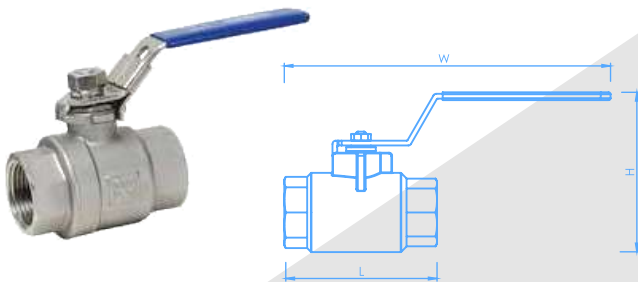
Part Number	Size	L	W	H
FPBV-2-21	21	67	154	70
FPBV-2-33	33	82	183	90
FPBV-2-48	48	104	254	130
FPBV-2-60	60	122	318	150

SS-304-ONE PIECE FULL BORE FEMALE THREAD BALL VALVE PN-16



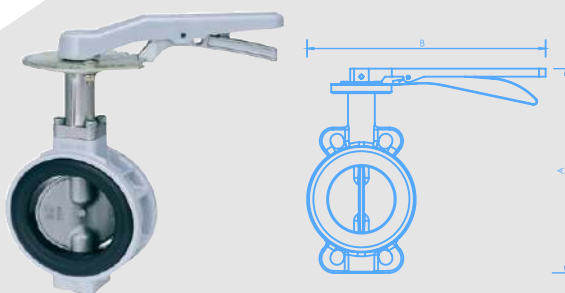
Part Number	Size	L	W	H
FPBV-4-21	21	67	154	70
FPBV-4-33	33	82	183	90
FPBV-4-48	48	104	254	130
FPBV-4-60	60	122	318	150

SS-316-L-ONE PIECE FULL BORE FEMALE THREAD BALL VALVE PN-16



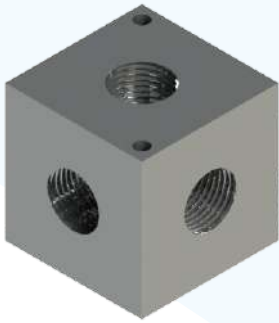
Part Number	Size	L	W	H
FPBV-6-21	21	67	154	70
FPBV-6-33	33	82	183	90
FPBV-6-48	48	104	254	130
FPBV-6-60	60	122	318	150

Aluminum / SS Butterfly Valve PN-16



Part Number	Size	A	B
FPBFV-73	73	274	253
FPBFV-90	90	308	260
FPBFV-114	114	328	270

Manifold



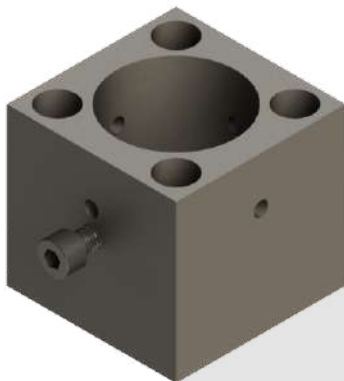
GEM Part Number	ACE Part Number	ACE+ Part Number	Size
FPM-2-21-1-3	FPM-4-21-1-3	FPM-6-21-1-3	21-1X3
FPM-2-21-1-6	FPM-4-21-1-6	FPM-6-21-1-6	21-1X6
FPM-2-33-1-3	FPM-4-33-1-3	FPM-6-33-1-3	33-1X3
FPM-2-33-1-6	FPM-4-33-1-6	FPM-6-33-1-6	33-1X6

Flexible R1 Hose



Part Number	Size (Mtr.)
FPFH-21-1	21x1 Mtr
FPFH-33-1	33x1 Mtr
FPFH-48-1	48x1 Mtr
FPFH-60-1	60x1 Mtr

Set Of Drilling Fixture



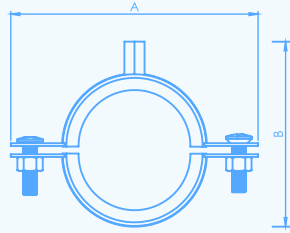
Part Number	Size
FPDF-21	21
FPDF-33	33
FPDF-48	48
FPDF-60	60
FPDF-73	73
FPDF-90	90
FPDF-114	114

Pipe Cutter



Part Number	Size
FPPCU 65	60
FPPCU 125	114

Pipe Clips



Part Number	Size	L	W
FPPC-21	21	65	47
FPPC-33	33	83	59
FPPC-48	48	93	71
FPPC-60	60	106	83
FPPC-73	73	135	97
FPPC-90	90	142	115
FPPC-114	114	166	135

Wall Mounting Bracket



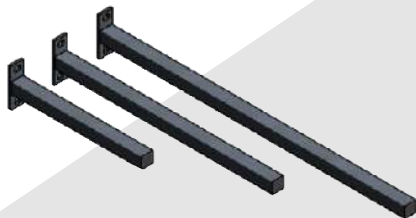
Part Number	Size
FPWMB-4X2	100X50
FPWMB-6X2	150X50

G Beam Clamp



Part Number	Slot	L	H	W
FPGBC-20	24	60	50	20

Cantilever Support For Pipe



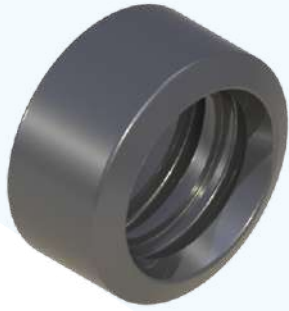
Part Number	Size	Length
FPCSP-200	130X50X4	200
FPCSP-250	130X50X4	250
FPCSP-500	300X50X5	500

Slotted U-Channel



Part Number	Size	Length
FPSUC-33X1	33	1000

Main Seal Rubber - Coupling



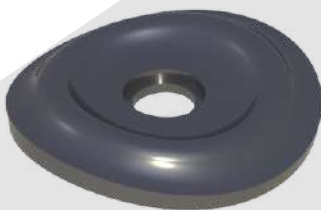
NBR Part Number	SILICONE Part Number	VITON Part Number	Size
FPCMSR-N-21	FPCMSR-S-21	FPCMSR-V-21	21
FPCMSR-N-33	FPCMSR-S-33	FPCMSR-V-33	33
FPCMSR-N-48	FPCMSR-S-48	FPCMSR-V-48	48
FPCMSR-N-60	FPCMSR-S-60	FPCMSR-V-60	60
FPCMSR-N-73	FPCMSR-S-73	FPCMSR-V-73	73
FPCMSR-N-90	FPCMSR-S-90	FPCMSR-V-90	90
FPCMSR-N-114	FPCMSR-S-114	FPCMSR-V-114	114

Seal Ring - Saddle Branch



NBR Part Number	SILICONE Part Number	VITON Part Number	Size
FPDSR-N-33X21	FPDSR-S-33X21	FPDSR-V-33X21	33X21
FPDSR-N-48X33	FPDSR-S-48X33	FPDSR-V-48X33	48X33
FPDSR-N-60X33	FPDSR-S-60X33	FPDSR-V-60X33	60X33
FPDSR-N-73X48	FPDSR-S-73X48	FPDSR-V-73X48	73X48
FPDSR-N-90X60	FPDSR-S-90X60	FPDSR-V-90X60	90X60
FPDSR-N-114X73	FPDSR-S-114X73	FPDSR-V-114X73	114X73

Flat Seal Ring



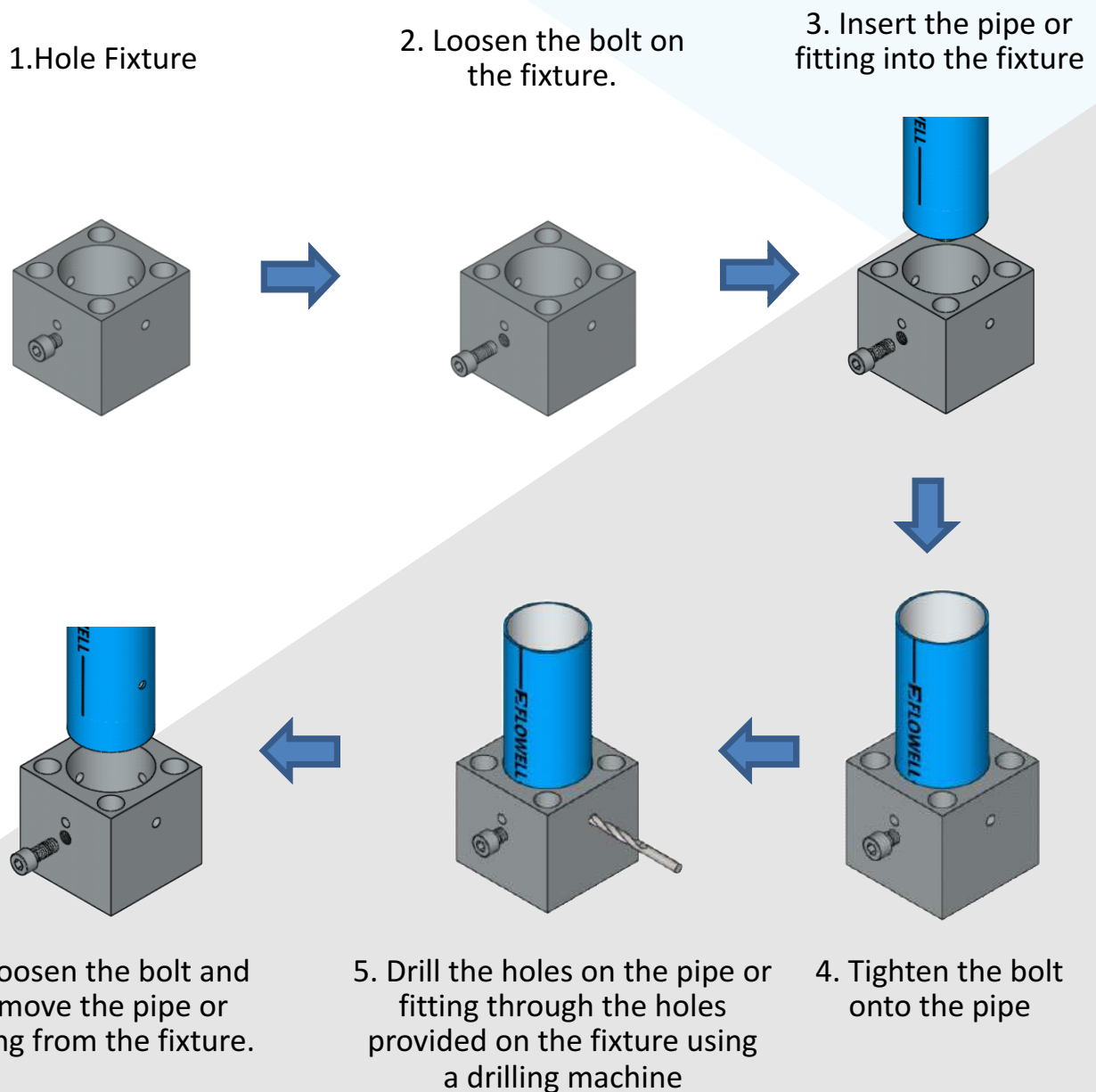
NBR Part Number	SILICONE Part Number	VITON Part Number	Size
FPCFSR-N-21	FPCFSR-S-21	FPCFSR-V-21	21
FPCFSR-N-33	FPCFSR-S-33	FPCFSR-V-33	33
FPCFSR-N-48	FPCFSR-S-48	FPCFSR-V-48	48
FPCFSR-N-60	FPCFSR-S-60	FPCFSR-V-60	60
FPCFSR-N-73	FPCFSR-S-73	FPCFSR-V-73	73
FPCFSR-N-90	FPCFSR-S-90	FPCFSR-V-90	90
FPCFSR-N-114	FPCFSR-S-114	FPCFSR-V-114	114

INSTALLATION GUIDE

HOLE DRILLING FIXTURE

Key Features :

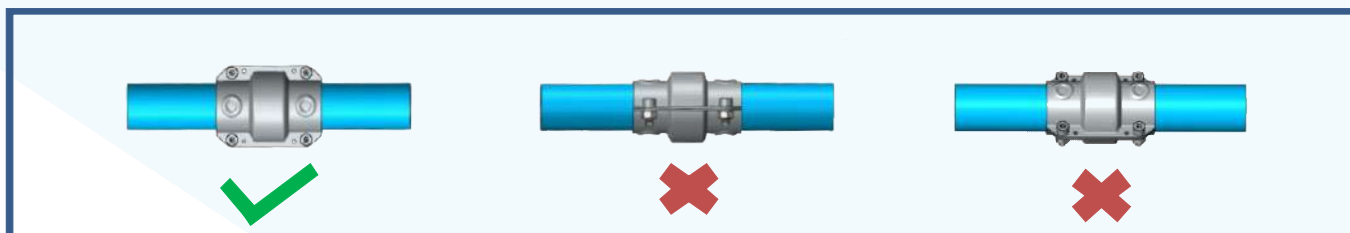
- The hole fixture checks for roundness and cylindricity of the pipe and fittings.
- The hole is located perfectly onto the pipes and fittings on which the couplings are going to be mounted.
- The holes are drilled using a regular drilling machine and no special tools are required.



COUPLING ASSEMBLY

Important Note :

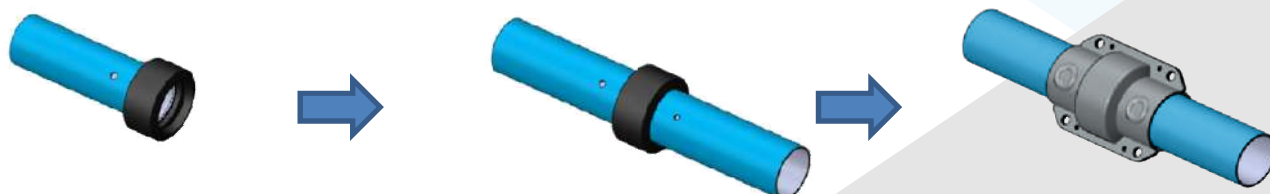
- The couplings should be clamped in upright position only.



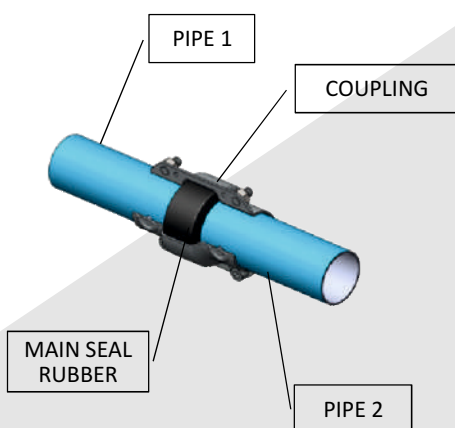
1. Insert one end of the Main Seal Rubber into the end of the first pipe.

2. Insert second pipe from the other end of the Main Seal Rubber.

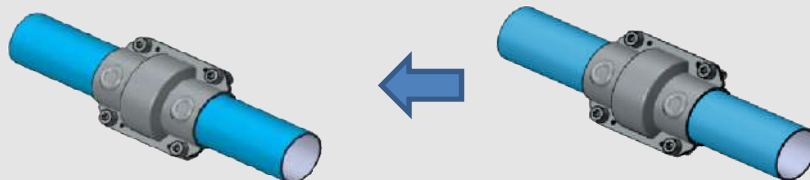
3. Clamp the coupling on to the Main Seal Rubber and Pipes sub-assembly with the help of studs provided on the coupling and holes drilled on the pipes.



Sectional View of Coupling Assembly



Coupling Assembly

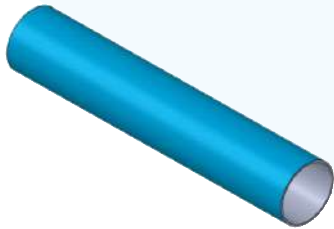


5. Tighten the nuts onto the bolts to tightly clamp the coupling on to the pipe.

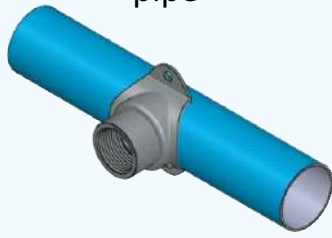
4. Insert bolts through the holes provided on the coupling

SADDLE BRANCH ASSEMBLY

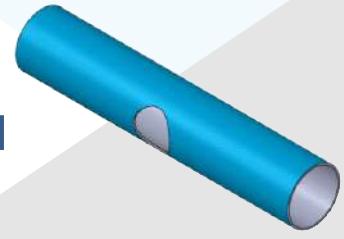
1. Locate the position where the drop is to be taken.



2. Place the front part of the saddle branch on the pipe and mark the hole on the pipe



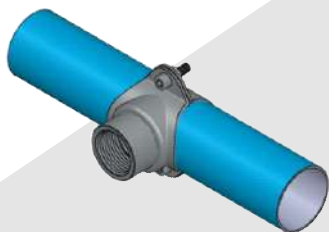
3. Cut the marked hole with the help of hole saw cutter attached to drill machine.



6. Place the back part of saddle branch on the pipe.

5 Place the front part of the saddle branch on the pipe in such a way that the hole on the pipe matches with the hole on the front part of saddle branch.

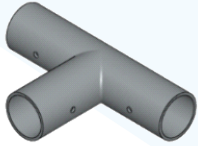
4. Remove burr by using deburring tool.



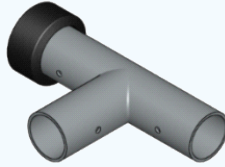
7. Insert bolts in the holes provided on the front and back parts of saddle branch and tighten the nuts to tightly clamp both the parts on to the pipe.

TEE ASSEMBLY

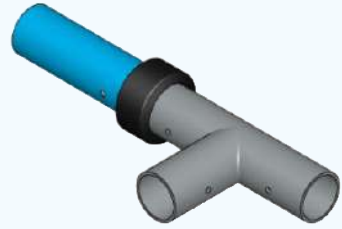
1



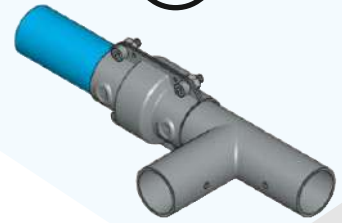
2



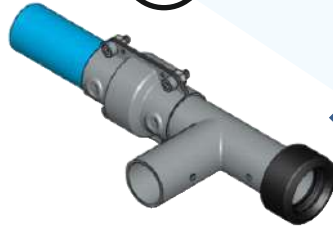
3



4



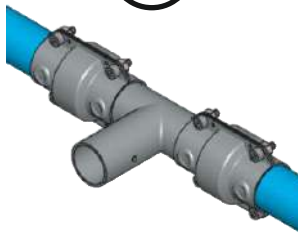
5



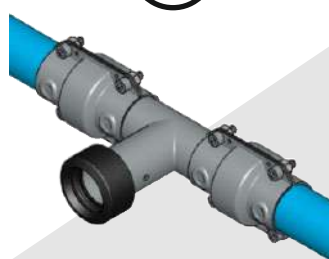
6



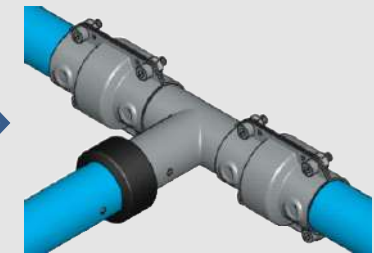
7



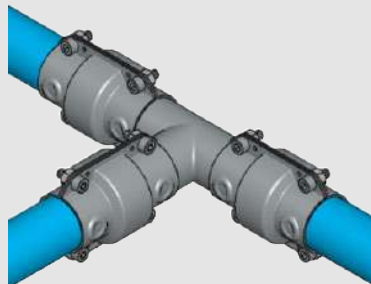
8



9

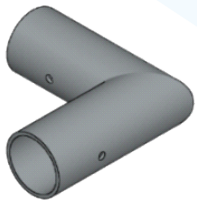


10

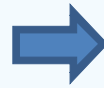
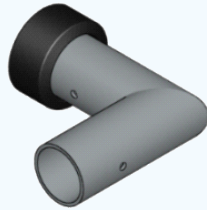


ELBOW ASSEMBLY

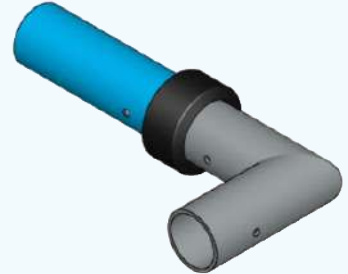
1



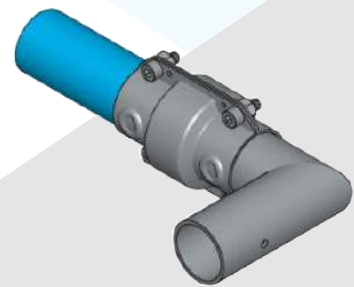
2



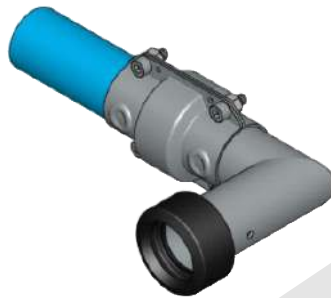
3



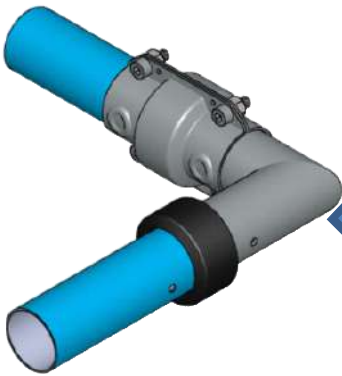
4



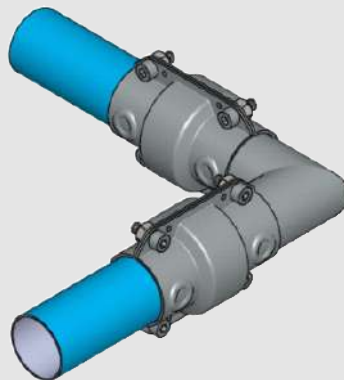
5



6



7

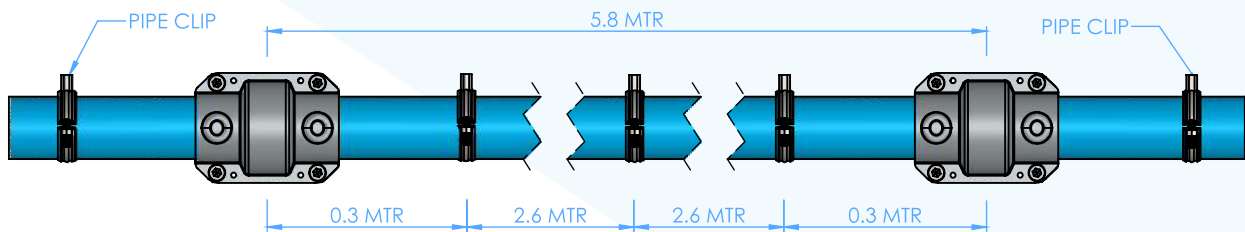


SUPPORTS INSTALLATION

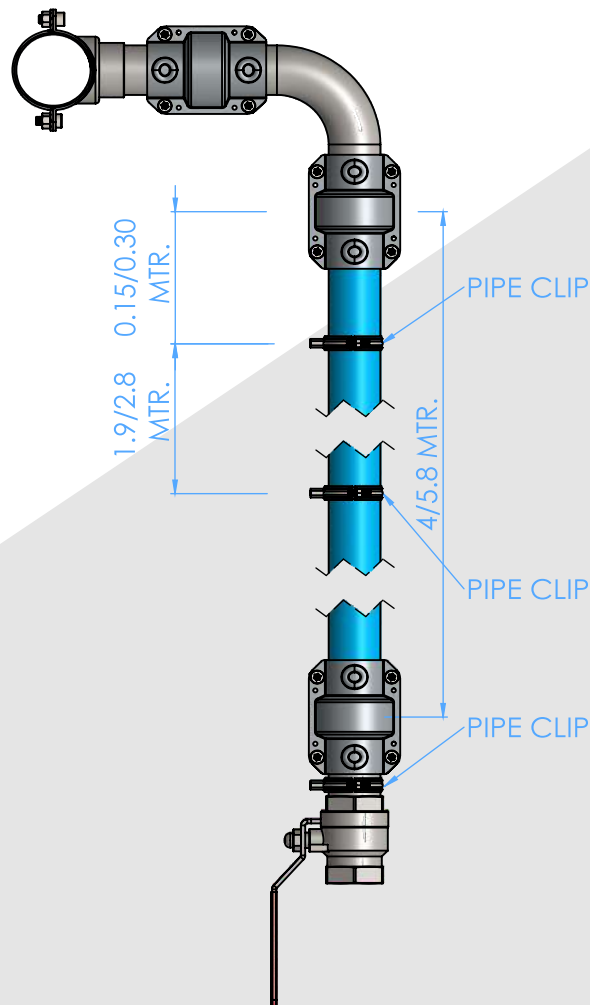
Important Note :

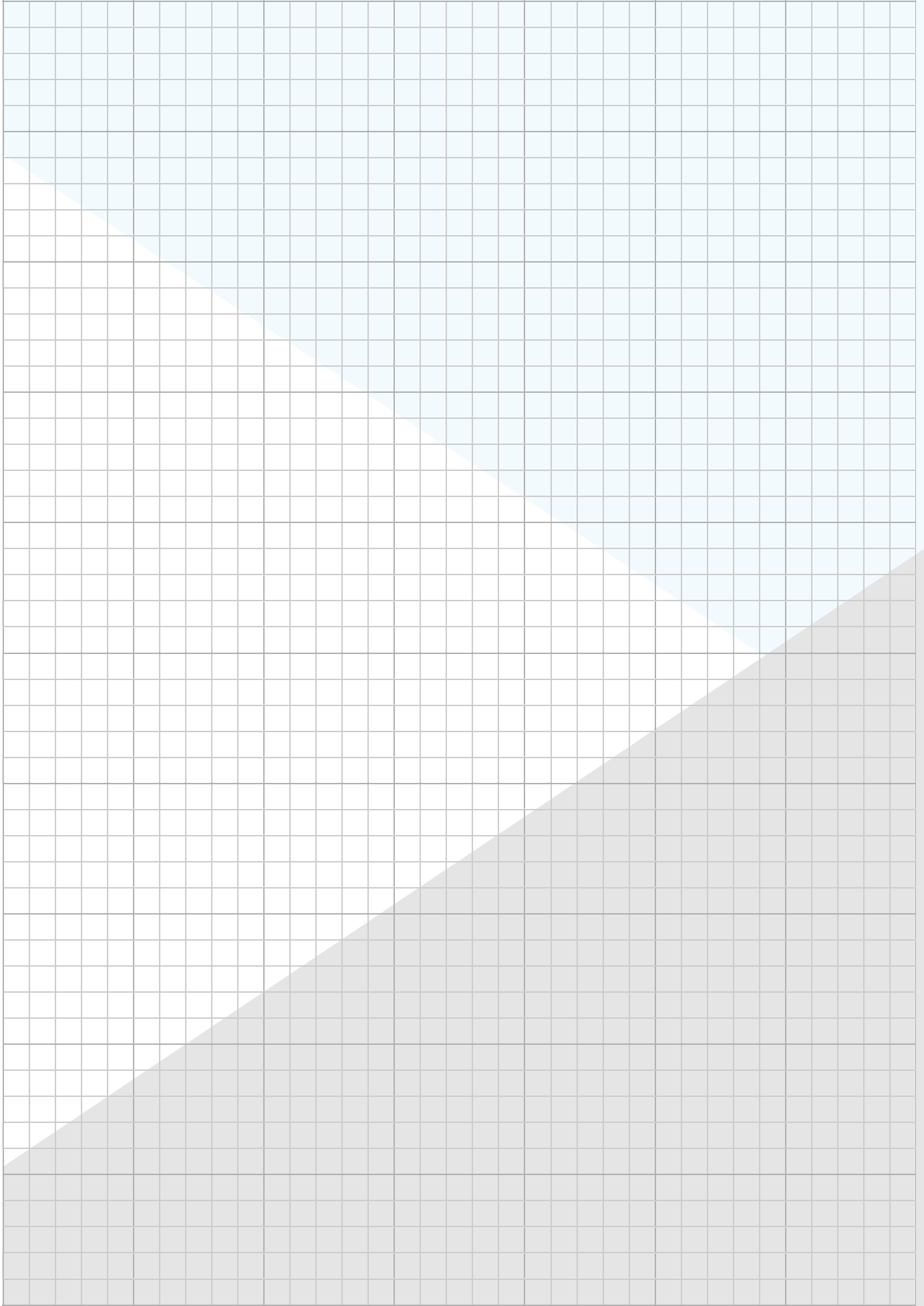
- Support should be provided near each fittings such as ball valve, coupling, reducing & regular tee, elbow, flange adapter, etc. to counter the weight of stainless steel

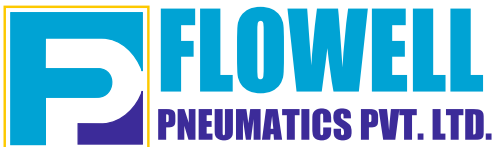
SUPPORTS INSTALLATION FOR HEADERS & SUB - HEADERS:



SUPPORTS INSTALLATION FOR DROPS:







AIR PIPING SOLUTIONS

Register Office :

Kimaya, Sr. No. 43/2/4, Gurukrupa Colony Lane No. 2,
Wadachi Wadi Road, Opp. Rim's International School,
Undri, Pune - 411 060.

Factory Add. :

Sr. No. 36/1/5, Mantarwadi, Uruli Devachi, Pune - 412 308.

Website : www.flowellpneumatics.in

E-mail : info@flowellpneumatics.in

Contact : +91 9372919096



Authorised Dealer